

Low cost MLAK keys may be purchased from Master Locksmiths Association of Australasia (MLAA) members Australia wide.

For the name and location of your nearest MLAA member please contact:

**National Office MLAA on
Free Call 1800 810 698**

or log on to the website:

www.masterlocksmiths.com.au

or see over page for two Blue Mountains MLAA members.

*Note: There are also a number of MLAA members in the **Penrith** region.*

Spinal Cord Injuries Australia (SCIA) has a register of where the locks are fitted.

The Master Locksmith Access Key System has been developed to improve access for people with disabilities.

MLAK has been designed to improve and not to encourage owners to lock their accessible facilities.

Websites to view at your leisure:

1. **The National Public Toilet Map**
www.toiletmap.gov.au
2. **Spinal Cord Injuries Australia (SCIA)**
www.scia.org.au
3. **Master Locksmiths Assoc. of Australasia (MLAA)**
www.masterlocksmiths.com.au

Check **Blue Mountains City Council's Access & Equity page** at www.bmcc.nsw.gov.au for updates to the Blue Mountains Accessible Toilets list.

"Making Community Facilities Accessible"

Council managed ACCESSIBLE Public Toilets in the Blue Mountains with a MLAK includes:

- **Blackheath Carpark**, Govetts Leap Rd (near Ivanhoe Hotel & Victory Theatre Antiques)
- **Sutton Park, Blackheath** - Great Western Hwy, (just South of the township)
- **Blaxland Mall** - Station St (near shops & Hwy foot-bridge)
- **Glenbrook Park - Ross St** (located behind Glenbrook Visitors Information Centre)
- **Hazelbrook Shopping Precinct** - Great Western Hwy
- **Katoomba Falls Reserve** - Cliff Drive
- **Echo Point, Katoomba** - Echo Point Road
- **"Studleigh Place"**, Katoomba St, Katoomba (next door to the Telstra building)
- **Leura Mall Carpark** - Megalong St
- **Medlow Bath Park** - Railway Parade
- **Mt Wilson Rural Fire Station** - The Avenue (opposite the Mt Wilson Village Hall)
- **Springwood Carpark North** - Macquarie Rd (north of road, not far from the Post Office)
- **Buttenshaw Park, Springwood** - Great Western Hwy
- **Coronation Park, Wentworth Falls** - (opposite the shops near the War Memorial)
- **Bulls Camp Reserve, Woodford** - Great Western Hwy
- **Adult Change Facility Cultural Centre Katoomba** (Parke St)
- **Lift and Change Facility Echo Point** (Cliff Drive)
- **Adult Change Facility** (Blue Mountains Theatre Hub Springwood (Macquarie Rd)
- **Adult Change Facility** (Glenbrook District Park)

FOR MORE INFORMATION CONTACT:

Spinal Cord Injuries Australia (SCIA)
Tel. (02) 9661 8855
Tel. 1800 819 775

The Master Locksmiths Association of Australasia Ltd (MLAA) on:
Tel. 1800 810 698

Contact the Aged & Disability Services Development Officer at BMCC on
Tel. 4780 5546 or 4780 5000

ACCESS FOR PEOPLE WITH DISABILITIES



MLAK

MASTER LOCKSMITH ACCESS KEY SYSTEM

Winner of National Award for Innovation in Local Government Citizens Services



April 2021



Produced by Blue Mountains City Council with permission of MLAA (Aug 2007) to help raise the profile of this key system in our local area.

The Master Locksmith Access Key

MLAK

The Master Locksmith Access Key

The Master Locksmith Access Key (**MLAK**) is an innovative system that allows 24 hours a day access to public facilities (e.g. toilets for people with a disability). It was introduced in the mid 1990s and is recognised Australia wide.

Accessible facilities should be open during the day, however sometimes it is necessary to lock them after hours (e.g. to protect community building assets overnight and to ensure the facility is ready and available for the next day).

The MLAK is designed to **INCREASE ACCESS** to facilities that would under normal circumstances be locked after hours.

The MLAK will reduce the level of vandalism, keep facilities clean and at the same time overcome the obstacle of accessible toilets being locked.

Your Blue Mountains MLAA members are:

All-Locks Master Locksmiths

Unit 2/29 Attunga Rd, Blaxland

Tel. (02) 4739 3656

www.all-locks.com.au

Lock Logic

mobile 0438 009 916

www.locklogic.com.au



Eligibility

Access is restricted to people who have a disability

OR

Those who have written authority from

- ◆ A Doctor
- ◆ A Disability Organisation
- ◆ A Community Health Centre
- ◆ The Centre Management or owner of a building with an accessible toilet on site

Eligible people will be able to purchase a key that will open all accessible toilets that display the MLAK key symbol below:

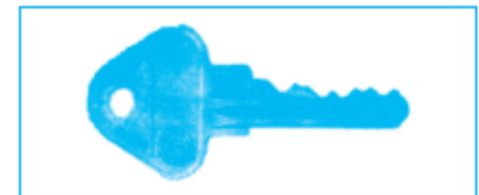


MLAK key symbol

What is the MLAK?

The MLAK is a master key that fits into specially designed locks.

Two types of key will be available, a standard triangular head key:



and one with a specially designed large head for use by people with impaired hand function.



The specially designed key head takes advantage of a device, called a Lederer Key Leverage Aid, which was designed by Technical Aid for the Disabled (TAD).