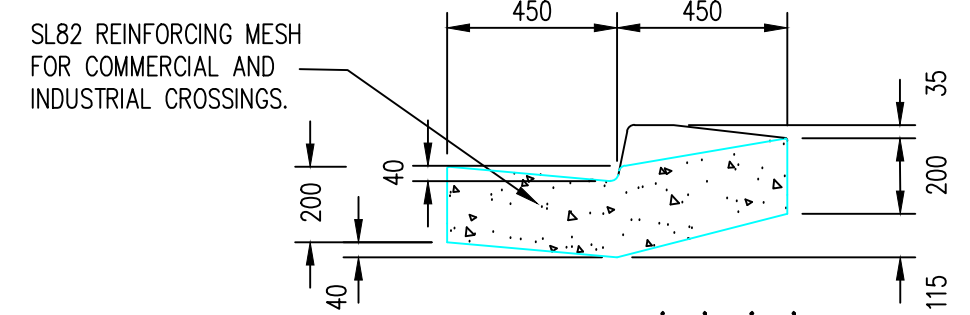


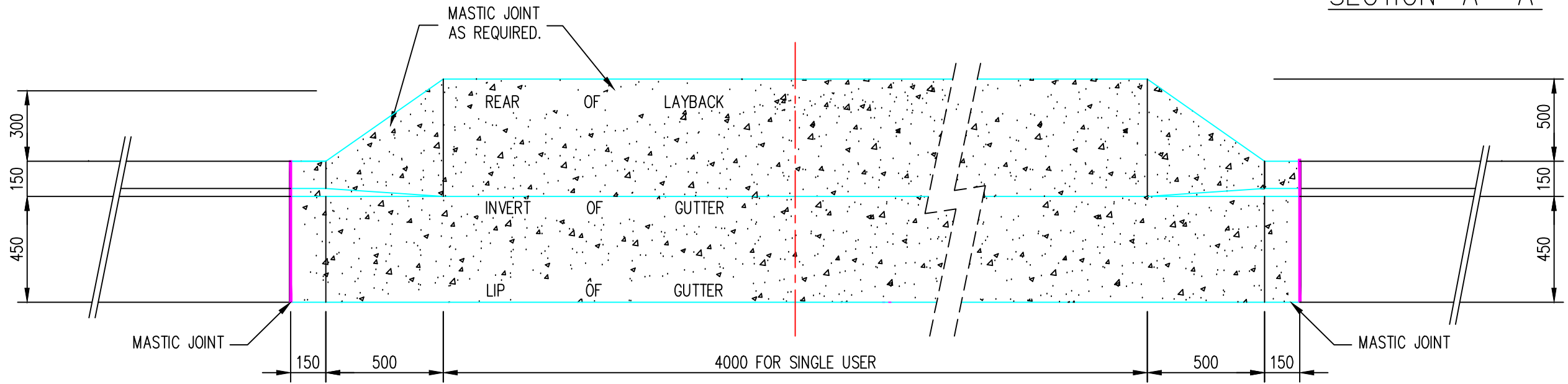
ELEVATION

NOTES:

1. ALL COMMERCIAL & INDUSTRIAL LAYBACKS OR DISH CROSSINGS TO HAVE ONE LAYER OF SL82 REINFORCING MESH CENTRALLY LOCATED AND TO BE 200MM THICK.
2. CONCRETE STRENGTH TO BE 25MPa.

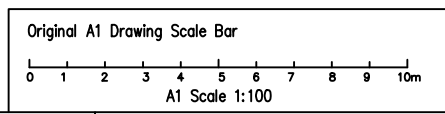


SECTION 'A'-'A'



4000 FOR SINGLE USER
7300 FOR TWO USERS (ADJACENT BLOCKS)
5500 FOR PARKS, LANES, RIGHTS OF WAY ETC.

PLAN



Rev.	DESCRIPTION	APPROVED	DATE
A	STANDARD REVIEWS PANEL	M.K.	07/2018
AMENDMENTS			

LEGEND			
▲ SURVEY CONTROL STATION	AV AIR VALVE	○ LP LIGHT POLE	▣ RURAL/JUNCTION PIT
● PM PERMANENT MARK	OH HYDRANT	○ PP POWER POLE	▽ HEADWALL
○ RM REFERENCE MARK	○ SV STOP VALVE	○ SP SERVICE POLE	
□ PEG	■ S SEWER MAN/HOLE	○ ELEC UNDERGROUND ELECTRICAL CABLE	
○ MW SURVEY MARK	■ T TELSTRA PIT	■ GAS GAS PIT	
○ SHRUB	■ LARGE TELSTRA PIT		
○ TREE			

Approved by - date
M.KOCOSKI-29/06/2018
Autocad: 6000-R-03A.DWG
Chkcod: N/A

THE COUNCIL OF THE CITY OF BLUE MOUNTAINS
SCALE: 1:20
Surveyed: N/A
Drawn: M.K.
Checked: M.K.

DATUM: N/A
ORIGIN: N/A
INFRASTRUCTURE & STRATEGIC ASSETS / DESIGN & SURVEY
LAYBACK CROSSING

Job Folder No: TSLIBRARIES\DESIGN\LIBRARY\STAND_DRAWINGS\6000-ROADS
Revision: A
Drawing No: 6000-R-03A
SHEET 1 OF 1 SHEETS