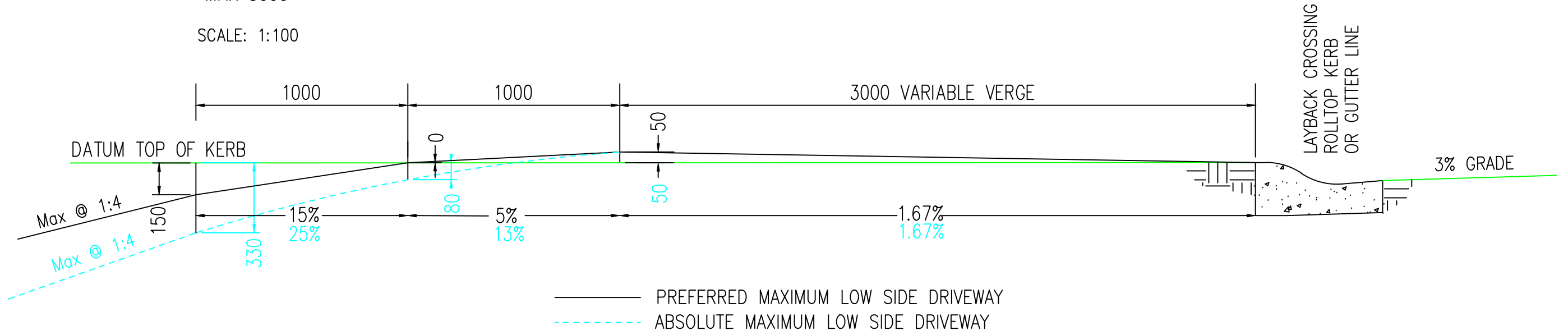
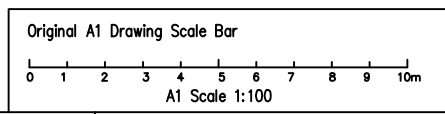


——— PREFERRED MAXIMUM HIGH SIDE DRIVEWAY  
 - - - - ABSOLUTE MAXIMUM HIGH SIDE DRIVEWAY  
 SCALE: 1:20

- NOTES:**
- THESE PROFILES HAVE BEEN DEVELOPED TO ALLOW 85 PERCENTILE CARS TO HAVE ACCESS IN EXTREME CONDITIONS USUALLY ASSOCIATED WITH EXISTING ROAD AND PROPERTY DEVELOPMENTS
  - ACCEPTABLE DRIVEWAY SPLAYS (STRAIGHT OR CURVED) TO AVOID CROSSING THE ROAD CENTRELINE WHERE KERB AND GUTTER IS CONSTRUCTED



——— PREFERRED MAXIMUM LOW SIDE DRIVEWAY  
 - - - - ABSOLUTE MAXIMUM LOW SIDE DRIVEWAY  
**ACCESS PROFILES**  
 SCALE: 1:20



Rev.	DESCRIPTION	APPROVED	DATE
A	STANDARD REVIEWS PANEL	M.K.	08/2018
B	MAX AND MIN WIDTHS	M.K.	08/2018

LEGEND	
▲ SURVEY CONTROL STATION	○ LP LIGHT POLE
○ PM PERMANENT MARK	○ HP POWER POLE
○ RM REFERENCE MARK	○ SP SERVICE POLE
○ PEG PEG	○ UNDERGROUND ELECTRICAL CABLE
○ MIN SURVEY MARK	○ TELSTRA PIT
○ SHRUB	○ LARGE TELSTRA PIT
○ TREE	○ GAS GAS PIT
	■ RURAL/JUNCTION PIT
	▽ HEADWALL
	☒ PHONE PHONE BOX

Approved by - date  
 M.KOCOSKI-23/08/2018  
 Autocad: 6000-R-01A.DWG  
 Chkcod: N/A

SCALE: AS SHOWN  
 Surveyed: N/A  
 Drawn: M.K.  
 Design: M.K.  
 Checked: M.K.

**THE COUNCIL OF THE CITY OF BLUE MOUNTAINS**  
 INFRASTRUCTURE & STRATEGIC ASSETS / DESIGN & SURVEY  
**DRIVE WAY ACCESS PROFILES**

Job Folder No: TS/LIBRARIES/DESIGN/LIBRARY/STAND\_DRAWINGS/6000-ROADS  
 Revision: A Sheet Size: A3  
 Drawing No: 6000-R-05B  
 SHEET 1 OF 1 SHEETS