

ENCLOSURE 1

**BLUE MOUNTAINS CULTURAL CENTRE AND KATOOMBA
LIBRARY REPORT 21 JUNE 2005**

DETAILED SCHEMATIC DESIGN PLANS

GROUND FLOOR PLAN

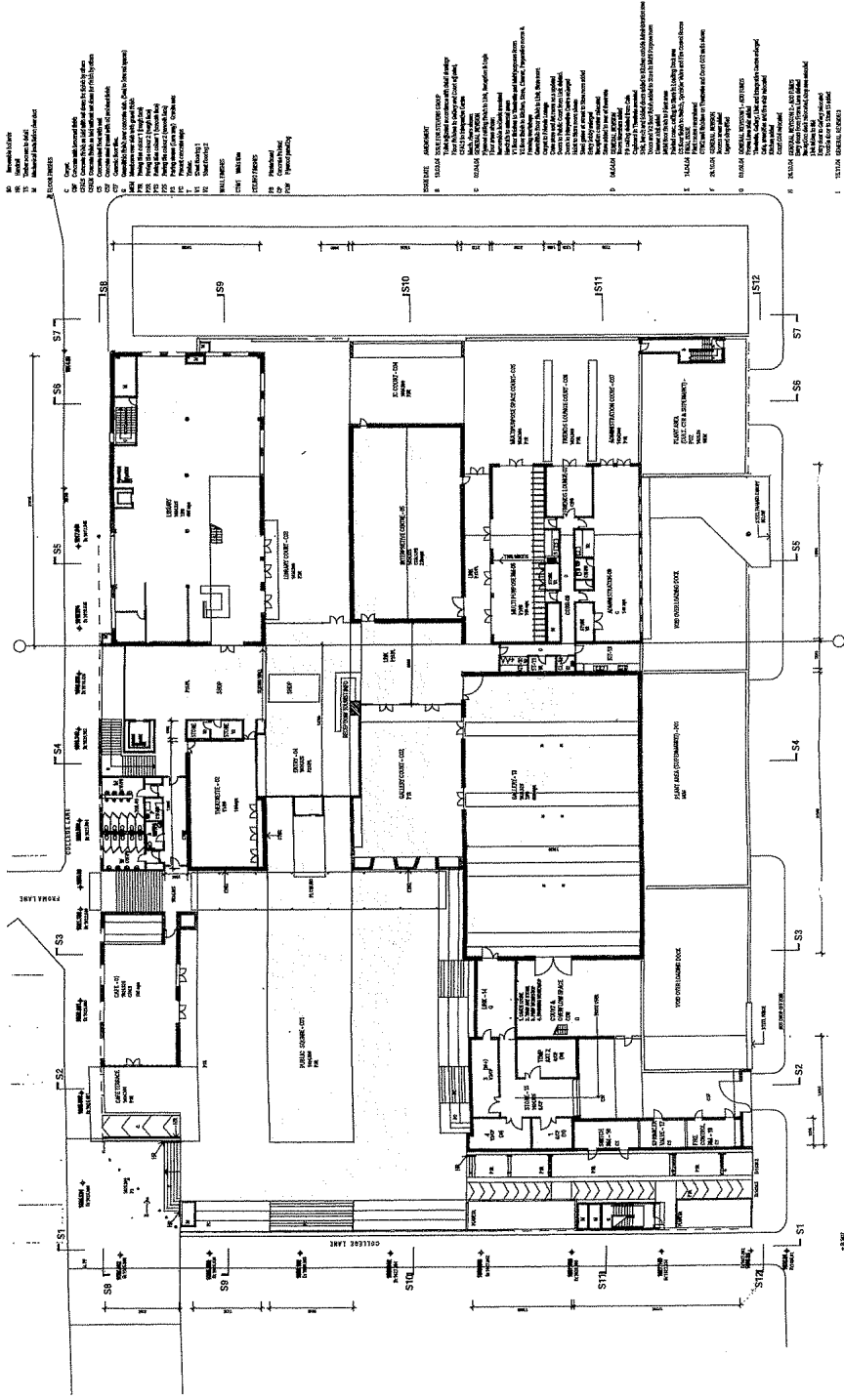
DATE: 01.10.2001

1:200 @ A1 1:400 @ A3

ASSEMBLY ROOM - Schedule of Materials and Finishes
ASSEMBLY ROOM - Schedule of Materials and Finishes



Scale bar showing 0, 1, 2, 3, 4, 5, 6, 7, 8, 9, 10 meters.



- 1. CONCRETE: ALL CONCRETE TO BE SUPPLIED AND CAST IN SITU.
- 2. WALLS: ALL WALLS TO BE CONCRETE BLOCKWORK WITH POLYSTYRENE INSULATION.
- 3. ROOF: ALL ROOFING TO BE CORRUGATED GALVANIZED IRON SHEETING WITH POLYSTYRENE INSULATION.
- 4. FLOORING: ALL FLOORING TO BE POLISHED CONCRETE.
- 5. CEILING: ALL CEILING TO BE POLISHED CONCRETE.
- 6. DOORS: ALL DOORS TO BE ALUMINUM FRAME GLASS DOORS.
- 7. WINDOWS: ALL WINDOWS TO BE ALUMINUM FRAME GLASS WINDOWS.
- 8. PAINTS: ALL PAINTS TO BE EPOXY RESIN PAINTS.
- 9. LIGHTING: ALL LIGHTING TO BE LED LIGHTING.
- 10. MECHANICAL: ALL MECHANICAL SERVICES TO BE INSTALLED IN ACCORDANCE WITH THE relevant standards.
- 11. ELECTRICAL: ALL ELECTRICAL SERVICES TO BE INSTALLED IN ACCORDANCE WITH THE relevant standards.
- 12. SANITARY: ALL SANITARY SERVICES TO BE INSTALLED IN ACCORDANCE WITH THE relevant standards.
- 13. GLASS: ALL GLASS TO BE TINTED GLASS.
- 14. GLASS: ALL GLASS TO BE LAMINATED GLASS.
- 15. GLASS: ALL GLASS TO BE SAFETY GLASS.
- 16. GLASS: ALL GLASS TO BE LOW EMISSION GLASS.
- 17. GLASS: ALL GLASS TO BE ENERGY EFFICIENT GLASS.
- 18. GLASS: ALL GLASS TO BE SUSTAINABLE GLASS.
- 19. GLASS: ALL GLASS TO BE RECYCLED GLASS.
- 20. GLASS: ALL GLASS TO BE LEAD FREE GLASS.
- 21. GLASS: ALL GLASS TO BE CLEAR GLASS.
- 22. GLASS: ALL GLASS TO BE TINTED GLASS.
- 23. GLASS: ALL GLASS TO BE LAMINATED GLASS.
- 24. GLASS: ALL GLASS TO BE SAFETY GLASS.
- 25. GLASS: ALL GLASS TO BE LOW EMISSION GLASS.
- 26. GLASS: ALL GLASS TO BE ENERGY EFFICIENT GLASS.
- 27. GLASS: ALL GLASS TO BE SUSTAINABLE GLASS.
- 28. GLASS: ALL GLASS TO BE RECYCLED GLASS.
- 29. GLASS: ALL GLASS TO BE LEAD FREE GLASS.
- 30. GLASS: ALL GLASS TO BE CLEAR GLASS.

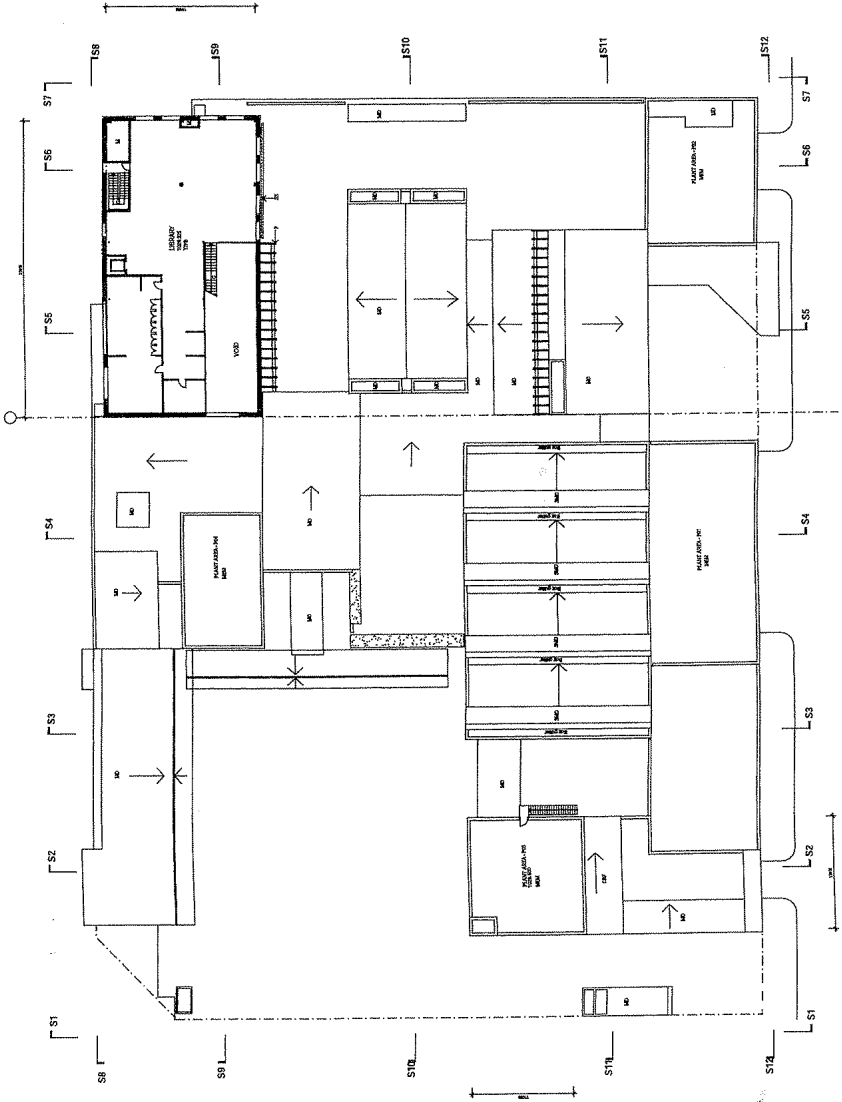


1:200 @ A1 1:400 @ A3

BLUE MOUNTAINS CATHEDRAL CENTRE

FIRST FLOOR PLAN

CULT_A02-1000F



LEGEND

- M Mechanical machinery and duct
- P Timber floor joists and trusses
- ES Steel (timber structure)
- FLYING STAIRS
- SMV Mechanical services and ductwork
- C Concrete slab and walls
- T Timber structure and roof trusses
- TR Timber structure and roof trusses
- CEILING SERVICES
- FB FLOORING

- NOTE: ALL WORK IS TO BE COMPLETED BY THE CONTRACTOR.
- B. FINISHES TO BE AS SHOWN ON THE DRAWINGS.
- C. ALL WORK TO BE COMPLETED BY THE CONTRACTOR.
- D. ALL WORK TO BE COMPLETED BY THE CONTRACTOR.
- E. ALL WORK TO BE COMPLETED BY THE CONTRACTOR.
- F. ALL WORK TO BE COMPLETED BY THE CONTRACTOR.

1:200 @ AT 1:400 @ AS

CULT-ASB-15048-D

- LEGEND**
- WALL TYPES**
- 01 Concrete masonry (2 courses) 100mm thickness, 100mm purlin and block
 - 02 Concrete block with vertical expansion joint and with up-poured block
 - 03 Fibrous insulation
 - 04 Fibrous insulation
 - 05 Fibrous insulation
 - 06 Fibrous insulation
 - 07 Fibrous insulation
 - 08 Fibrous insulation
 - 09 Fibrous insulation
 - 10 Fibrous insulation
 - 11 Fibrous insulation
 - 12 Fibrous insulation
 - 13 Fibrous insulation
 - 14 Fibrous insulation
 - 15 Fibrous insulation
 - 16 Fibrous insulation
 - 17 Fibrous insulation
 - 18 Fibrous insulation
 - 19 Fibrous insulation
 - 20 Fibrous insulation
 - 21 Fibrous insulation
 - 22 Fibrous insulation
 - 23 Fibrous insulation
 - 24 Fibrous insulation
 - 25 Fibrous insulation
 - 26 Fibrous insulation
 - 27 Fibrous insulation
 - 28 Fibrous insulation
 - 29 Fibrous insulation
 - 30 Fibrous insulation
 - 31 Fibrous insulation
 - 32 Fibrous insulation
 - 33 Fibrous insulation
 - 34 Fibrous insulation
 - 35 Fibrous insulation
 - 36 Fibrous insulation
 - 37 Fibrous insulation
 - 38 Fibrous insulation
 - 39 Fibrous insulation
 - 40 Fibrous insulation
 - 41 Fibrous insulation
 - 42 Fibrous insulation
 - 43 Fibrous insulation
 - 44 Fibrous insulation
 - 45 Fibrous insulation
 - 46 Fibrous insulation
 - 47 Fibrous insulation
 - 48 Fibrous insulation
 - 49 Fibrous insulation
 - 50 Fibrous insulation
 - 51 Fibrous insulation
 - 52 Fibrous insulation
 - 53 Fibrous insulation
 - 54 Fibrous insulation
 - 55 Fibrous insulation
 - 56 Fibrous insulation
 - 57 Fibrous insulation
 - 58 Fibrous insulation
 - 59 Fibrous insulation
 - 60 Fibrous insulation
 - 61 Fibrous insulation
 - 62 Fibrous insulation
 - 63 Fibrous insulation
 - 64 Fibrous insulation
 - 65 Fibrous insulation
 - 66 Fibrous insulation
 - 67 Fibrous insulation
 - 68 Fibrous insulation
 - 69 Fibrous insulation
 - 70 Fibrous insulation
 - 71 Fibrous insulation
 - 72 Fibrous insulation
 - 73 Fibrous insulation
 - 74 Fibrous insulation
 - 75 Fibrous insulation
 - 76 Fibrous insulation
 - 77 Fibrous insulation
 - 78 Fibrous insulation
 - 79 Fibrous insulation
 - 80 Fibrous insulation
 - 81 Fibrous insulation
 - 82 Fibrous insulation
 - 83 Fibrous insulation
 - 84 Fibrous insulation
 - 85 Fibrous insulation
 - 86 Fibrous insulation
 - 87 Fibrous insulation
 - 88 Fibrous insulation
 - 89 Fibrous insulation
 - 90 Fibrous insulation
 - 91 Fibrous insulation
 - 92 Fibrous insulation
 - 93 Fibrous insulation
 - 94 Fibrous insulation
 - 95 Fibrous insulation
 - 96 Fibrous insulation
 - 97 Fibrous insulation
 - 98 Fibrous insulation
 - 99 Fibrous insulation
 - 100 Fibrous insulation

- DATE** **REVISION**
- A 19/03/04 REVISED PER DESIGN GROUP
 - B 22/03/04 REVISED PER DESIGN GROUP
 - C 14/04/04 REVISED PER DESIGN GROUP
 - D 15/04/04 GENERAL REVISIONS

