

**ITEM NO: 10****SUBJECT: FINALISATION OF BLUE MOUNTAINS SEWAGE STRATEGY 2008****FILE NO: C07703**

---

**Recommendations:**

1. *That the Council receive this report and the document “Review of Public Submissions to the Draft Blue Mountains Sewage Strategy” provided as a separate Enclosure.*
  2. *That the Council adopt the recommendations contained within the document “Review of Public Submissions to the Draft Blue Mountains Sewage Strategy” including the proposed amendments to the Draft Blue Mountains Sewage Strategy.*
  3. *That Council receive and adopt the finalised “Blue Mountains Sewage Strategy 2008” ( provided as a separate Enclosure to this Report) which has been amended consistent with the recommendations contained in the “Review of Public Submissions to the Draft Blue Mountains Sewage Strategy”.*
  4. *That Council note the steps outlined to commence implementation of the Strategy.*
- 

**Report by Peter Adams, Group Manager Community and Corporate**

At its Ordinary Meeting of 7 November 2006, Council commenced the process to publicly exhibit the draft Blue Mountains Sewage Strategy by resolving:

- “1 *That the draft Blue Mountains Sewage Strategy be placed on public exhibition for a period of three months for public comment.*
- 2 *That the draft Blue Mountains Sewage Strategy be forwarded for comment to relevant government and non-government agencies and made available to the general public and Council libraries and Business Centres.*
- 3 *That submissions received in response to the public exhibition be assessed and reported to the Council for consideration in adopting the final Blue Mountains Sewage Strategy.”*

(Minute No. 777, 7/11/06)

In accordance with Recommendation 3, this report represents the final phase of the process commenced by the Council on 7 November 2006 to adopt a final Blue Mountains Sewage Strategy.

This report:

- Outlines the approach taken to reviewing the issues raised in the public submissions and includes the document “Review of Public Submissions to the draft Blue Mountains Sewage Strategy” as an Enclosure to this Report;

- includes a summary of the issues raised during the public consultation and resulting recommended amendments to the Strategy as outlined in detail in the Review of Public Submissions;
- includes a copy of the final version of the “Blue Mountains Sewage Strategy 2008” as an Enclosure to this Report which incorporates the changes arising from the public submission as well as a number of other factual updates; and
- outlines the first steps in implementing the Strategy.

**Background to preparation of the Blue Mountains Sewage Strategy 2008**

The Blue Mountains Sewage Strategy 2008 (referred to as “the Strategy”) reinforces the Council’s position regarding sewerage infrastructure and services to residential lots currently excluded from the Sydney Water Priority Sewerage Program.

The Strategy is based on a review and evaluation of the “2001 Sewage Strategy for the Blue Mountains” undertaken between May and August 2005 and reported to the Council at its Ordinary Meeting of 21 March 2006. The review highlighted the state government’s position in relation to three key outcome areas: (a) provision of reticulated sewer to residential properties in the Blue Mountains; (b) the use of subsidised effluent pump-out; (c) the management of high conservation value land in the Blue Mountains, and the Council’s proposed approach to progress the three outcomes as a component of the Strategy.

The Strategy outlines the strategic approach for the next 10 years, progressing the resolution of long-term sewage issues in the Blue Mountains. It is a response by Council to the need to find sustainable solutions to the historic sewage infrastructure deficiencies in areas committed to residential development. The Strategy contributes to the achievement of a number of Outcomes identified in the *Map for Action 2000-2025* for a more sustainable Blue Mountains including:

*Outcome 1.1: The Blue Mountains natural environment is protected*

*Outcome 1.2: The impact of existing and new development on the environment is reduced*

*Outcome 3.2: Well managed infrastructure supports sustainable living*

Planning for services such as reticulated sewerage requires targeted strategic work in partnership with key government agencies. The Strategy communicates clear priorities and sets targeted actions to work towards finding sustainable solutions for lots with residential zoning outside of the current Sydney Water Priority Sewerage Program.

**Approach taken to reviewing the issues raised in public submissions**

The draft Strategy was placed on public exhibition for a period of three months between 15 November 2006 and 16 February 2007. Copies of the draft Strategy were made available at the Council’s Katoomba and Springwood Offices, all Council Branch Libraries and the website. The public exhibition period was promoted through local papers, and copies of the draft were sent to specific government agencies and local interest groups inviting comment.

The Council received a total of seven (7) submissions to the public exhibition process including one (1) submission from an individual member of the public and submissions from the following state government and non-government agencies.

State Government:

- Sydney Water;
- Sydney Catchment Authority;
- Department of Environment and Climate Change; and
- Sydney West Area Health Service.

Non government:

- Blue Mountains Conservation Society; and
- Colong Foundation.

The consideration of the public submissions and the proposed response is provided as a separate Enclosure: “Review of Public Submissions to the Blue Mountains Sewage Strategy” (referred to as the “Review Document”).

The issues raised by respondents were organised against each of the components of the draft Strategy. In finalising the Strategy, the Council is required to consider the issues that were raised in the public submissions and determining what, if any, alterations should be made to the draft Strategy.

The issues raised in the submissions are broad ranging and have been considered in the Review Document in relation to the aspects of the draft Strategy identified in the table below:

A	<i>General comments</i>
B	<i>On-site wastewater disposal systems</i>
C	<i>Reticulated sewer</i>
D	<i>Greywater disposal systems</i>
E	<i>State legislation</i>
F	<i>Planning issues</i>
G	<i>Infrastructure and strategy issues</i>
H	<i>Outcomes identified in the strategy</i>
I	<i>Decision support model</i>
J	<i>Action plan</i>

The general format of the Review Document will be familiar to the Council, as it follows that used in the extensive review process for Draft Local Environmental Plan 2002 (DLEP 2002).

The document is organised under the headings outlined above, and provides:

- a description of the relevant issue in the draft Strategy;
- an overview of the submissions received on that issue;
- a table identifying whether the public submission:
  - supports the provision, with no refinements requested,
  - supports the provision, with refinements requested,
  - requests refinements to the provisions,
  - objects to the provision, with refinements requested,
  - objects to the provision, or
  - provides other comment in relation to the provision;
- a summary or statement of the issue, based on the headings in the table above;
- the consideration of the issues raised, providing relevant background to the particular approach taken, and suggesting any refinements or modifications to the draft Strategy

- in response to the public submissions; and
- recommended changes to the draft Strategy.

### **Summary of public submission issues and proposed response**

The issues and proposed response have been summarised below to assist in the Council's review of submissions. It follows the format of the Review Document, which is to be referred to for the details of the submissions and the recommendations arising from their consideration.

#### A. General comments

Four (4) submissions made general comments about the draft Strategy. Generally these were in support of the principals behind the draft Strategy. In response to these comments no changes were made to the draft Strategy as exhibited.

#### B. On-site wastewater disposal systems

Two (2) submissions made comment in relation to on-site sewage systems. One submission highlighted an alternative approach that the Council could investigate in relation to risk-based inspections of on-site systems whilst the other referred to the supporting data used in the draft Strategy. The draft Strategy was amended to address the issues raised in the Review Document in relation to on-site systems.

#### C. Reticulated sewer

One (1) submission made comments in relation to potential expansion of the reticulated sewer to small unsewered lots. Sydney Water wrongly assumed the outstanding lots within the Blue Mountains not identified for connection to reticulated sewer were previously zoned rural under Local Environmental Plan 4 (LEP 4) and later rezoned as residential under Local Environmental Plan 1991 (LEP 1991). This assumption is incorrect and is based on a misunderstanding of land use zone titles used in the LEPs and the related mechanisms. Essentially, while zone names vary widely, it is the location, character, residential capacity of the land and the size of the lots that determines the requirement for reticulated sewer, not the zone name. As a result of this incorrect approach, past expansions to the reticulated sewerage network have excluded small residential lots which historically have had dwelling potential and were located adjacent to existing villages, but were zoned Bushland Conservation or Residential Bushland Conservation under LEP 1991.

Discussions with Sydney Water should be urgently pursued aimed at conveying the history of lots available for residential purposes. It is essential to clarify the relationship between LEP 4 and LEP 1991 in order to get an agreement to, and implement, a future program for sewer services and infrastructure development in the Blue Mountains by the State Government. The draft Strategy was amended to provide further background to the historic changes in zoning in the Blue Mountains.

#### D. Greywater disposal systems

Two (2) submissions made comment in relation to greywater disposal systems. The submissions raise issues related to the potential risk of greywater to waterways and/ or groundwater and the opportunity to further educate the community about reducing greywater pollution risk. A number of wording changes were made to the draft Strategy to encompass the potential environmental impacts associated with the use of greywater.

**E. State Legislation**

One (1) submission noted that an environmental planning instrument had been gazetted during the timeframe within which the draft Strategy was on public exhibition. This information was updated in the Strategy.

**F. Planning issues**

One (1) submission was received in relation to the planning issues detailed in the draft Strategy. The submission commented on the use of development assessment tools for assessing the suitability of on-site systems and the different types of systems suited to the climatic conditions of the Blue Mountains. The draft Strategy was amended so that any future policy for on-site wastewater disposal will acknowledge the types of wastewater systems that are suitable to the climatic conditions across the City.

**G. Infrastructure and strategy issues**

Two (2) submissions made comments related to the early connection of lots to reticulated sewer and the status of the subsidised effluent pump-out scheme. No changes were made to the draft Strategy in response to the comments.

**H. Outcomes identified in the strategy**

Three (3) submissions were made strongly objecting to the use of commercial pump-out as a final option for wastewater disposal in the Blue Mountains. The Council recognises that commercial pump out is not the preferred waste water disposal options for the Blue Mountains and should be avoided. The Decision Support Model is linked to a number of strategic actions that aim to minimise the number of potential lots that would require pump-out as a last resort. These actions include the development of performance based controls for on-site effluent, a review of properties that may support on-site disposal if consolidated and the identification of high conservation value lands. It is anticipated that the requirement to fully investigate the above options, before commercial pump out is considered as a last resort, may mean very few if any lots may be developed on the basis of commercial pump out. Further, removing commercial pump out as the “last resort option” would greatly restrict, and impact on, the Council’s future decision-making options.

The Decision Support Model was therefore simplified, and it is made very clear in the model that for lots where reticulated sewer will not be available and residential development is to be considered, (ie the lot has not been assessed as high conservation value land and therefore considered for alternative management such as purchase by the Council or State Government) that on-site waste water disposal is the first option which should be pursued, where appropriate and subject to the provisions of the Better Living DCP and on-site performance measures. If on-site waste disposal is not an option, then consolidation of lots should then be pursued to allow on-site disposal, subject to the provisions of the Better Living DCP and on-site performance measures.

Only after all the above options have been exhausted, would the Council consider commercial pump-out as a “last resort” option, and only then with strict performance controls and monitoring..

**I. Decision Support Model**

Three (3) submissions made comments related to the Decision Support Model. One submission discussed the potential to reduce the number of scenarios in the Model from three to two. The other submissions made specific comments on the content of the Model. The

Model in the draft Strategy was subsequently simplified.

#### J. Action Plan

Four (4) submissions were made both supporting and objecting to specific actions contained with the action plan. Each action is discussed in detail in the Review Document and the Strategy was amended as a result.

#### **Steps to finalise the Blue Mountains Sewage Strategy 2008**

Following consideration of the matters raised in the public submissions to the Strategy by the Council and the adoption the Strategy, the document will be made available to the public through Council Offices and via the Council website.

A copy of the Strategy will be sent to those government agencies, non-government agencies and individuals who made submissions to the public exhibition thanking them for their involvement in the development of the Strategy.

#### **Steps to implement the Blue Mountains Sewage Strategy 2008**

City Planning, Community and Corporate Group, will co-ordinate and report on implementation of the Strategy Action Plan. It is anticipated that the first step will be the formation of an internal working group. It should be noted that many of the actions in the Strategy will fall within the work currently being undertaken as part of the preparation for a comprehensive Local Environmental Plan (LEP) for the City.

#### **Sustainability Assessment**

The Strategy goes a long way towards better managing the urban/ bushland interface, one of the six themes for “Targeting Action Now” identified in the *Map for Action 2000-2025*. The Strategy proposes a combination of sustainable solutions to address the historic deficiencies in reticulated sewer infrastructure across the Blue Mountains. When implemented, the Strategy will deliver significant environmental, health, social and economic benefits to both the community and the Council as outlined below.

<b>Effects</b>	<b>Positive</b>	<b>Negative</b>
Social	Improved health through improved sewage services	Nil
Environmental	Improved water quality, reduced weeds in creeks and waterways	Nil
Economic	Future land use decisions including residential development proceed sustainably	Nil

#### **Financial implications for the Council**

It should be noted that there are financial implications associated with some of the actions and objectives contained within the Strategy. As noted above, many of the actions will form part of the work currently being undertaken as part of the preparation for a comprehensive local environmental plan (LEP) for the city. However, some actions will need to be undertaken separately to the LEP work and therefore will need to be identified and budgeted for via future Management Plans and other corporate planning and budgeting processes.

#### **Legal and risk management issues for the Council**

There are no legal or risk management issues associated with the finalisation of the Strategy.

**External consultation**

Members of the community, government organisations and other external stakeholders were consulted in the preparation of the draft Strategy via a public exhibition process. The Review Document is attached as an enclosure and the draft Strategy subsequently amended.

**Internal consultation**

The Strategy was developed with the assistance of an internal staff working group made up of specialist staff from the Community and Corporate and Environmental and Customer Services Groups. The public submissions report and the recommended changes were also endorsed by key staff from these Groups.

**Conclusion**

It is proposed that the Council adopt the Strategy based on the recommendations of this Report.

The Strategy outlines the strategic approach for the next 10 years to progress the resolution of long-term sewage issues in the Blue Mountains. The Strategy works towards minimising the impact of sewage, one of the most significant sources of risk to public health and environmental degradation in the Blue Mountains catchment and World Heritage area. To achieve this, the Strategy guides actions that aim to resolve sewage issues whilst supporting sustainable land use decision-making and the protection of the natural environment.

\* \* \* \* \*

**ITEM NO: 11****SUBJECT: MOUNT YORK RESERVE PLAN OF MANAGEMENT – ADOPTION****FILE NO: F00796**

---

**Recommendations:**

1. *That the Council receive the public submission on the Draft Plan of Management*
  2. *That the Council adopt the Plan of Management for Mount York Reserve in accordance with the provisions of the NSW Crown Lands Act 1989, and use it to guide the management and development of Mount York Reserve.*
- 

**Report by Group Manager, Community and Corporate:**

At its ordinary meeting of 19 February 2008 the Council resolved:

- “1. *That the Council endorse the Draft Plan of Management for Mount York Reserve for the purpose of public exhibition in accordance with the provisions of the NSW Crown Lands Act 1989.*
2. *That the exhibition of the Draft Plan be widely advertised and promoted and be for a period of not less than six (6) weeks.*
3. *That a public meeting be held during the exhibition period.*
4. *That a report come back to the Council following the public exhibition.”*

(Minute no 4035 19/2/08)

**Report Summary**

The purpose of the report is to summarise the public submissions on the Draft Plan of Management (PoM) for Mount York Reserve, outline the amendments to the Draft Plan resulting from the public exhibition and request that the Council formally adopt the Plan of Management.

This report summarises the following:

- The public exhibition process;
- The submissions received from stakeholders and interest groups; and
- The amendments to the plan resulting from the submissions.

The analysis of public submissions and a copy of the final PoM are attached separately for the information of the Councillors.

**Background**

Mount York Reserve is located 5 kilometres north-west of Mount Victoria township and forms the northern part of the western escarpment reserve system of the Blue Mountains. It is highly valued for its nature based recreation and heritage items associated with the early European crossings of the Blue Mountains. The site contributes significantly to the social amenity and recreational opportunities for a diverse range of users.

The PoM for Mount York Reserve covers 28 parcels of Crown Reserve and 5 Crown road reserves with a combined area of approximately 653 hectares. Refer to Map 1. It is noted that in preparing this PoM, all land parcels are collectively referred to as 'Mount York Reserve' or 'The Reserve'. Currently, management of Mount York Reserve is separated between the Council, the Department of Lands and a private licensee.

The Mount York Reserve PoM does not cover any community land managed by the Council for which the NSW *Local Government Act 1993* provisions apply. The PoM has instead been prepared in accordance with the NSW *Crown Lands Act 1989* as the reserve is comprised entirely of Crown lands.

The Council engaged *Gondwana Consulting*, to develop the PoM on the Council's behalf. The PoM was funded from the Council's Environmental Levy budget and from grants received from the Department of Lands and the Department of Planning. Revenue from the licensing of nature based commercial operators also contributed to the cost of the Plan.

**Preparation of the Plan**

Mount York Reserve contains significant areas of undisturbed bushland and escarpment and is a popular nature based recreation site supporting climbing, abseiling, bushwalking, bike riding and horse riding. The Reserve also contains important heritage items including four historic roads dating from 1815 to the 1920s including Cox's Road (1815), Lawson's Long Alley (1822), Lockyer's line of Road (1828) and Berghofer's Pass (1920). Due to the State heritage significance of the historic roads and the popularity of the Reserve as a nature based recreation site, a plan is required to protect and manage the cultural heritage and natural character of the Reserve whilst allowing for its continued and expanding use. The Mount York Plan of Management is being prepared as a requirement of the NSW State Government to ensure the Council meets statutory obligations for Crown land management.

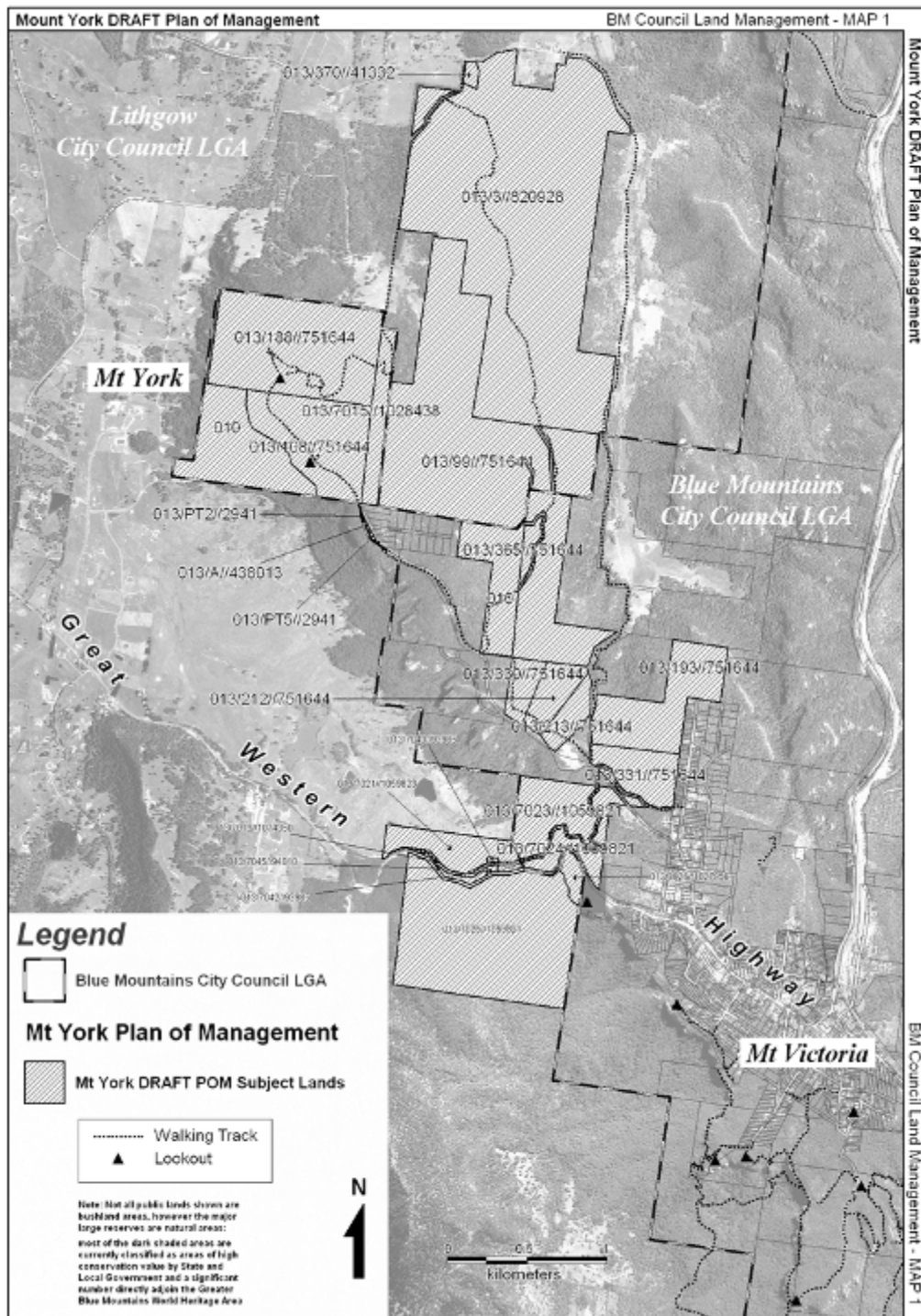
Preparation of the Plan commenced in February 2006 undertaking baseline studies on flora and fauna, heritage and recreational uses. Stakeholder consultation was carried out between April and June 2006. The consultation process, as outlined in the 19/2/08 report to the Council, included one to one meetings with key interest groups and two public meetings. The issues raised during the consultation process guided the development of policy and strategy for the Plan of Management.

Further investigation and research of the four (4) historic roads were carried out as part of developing a Conservation Management Strategy (CMS) for the roads. Recommendations from the CMS have been integrated into the PoM.

Issues raised through the site assessments and the stakeholder consultation process were addressed by the plan under the following categories:

- Cultural and historic heritage;
- Bushland/ flora and fauna;
- Visual and residential amenity;
- Recreation; and
- Reserve management.

Map 1: Various reserves covered by Mt York Reserve PoM..



**Public Exhibition**

The public exhibition of the Draft Plan of Management was in accordance with the *Crown Lands Act 1989*, requiring notification in a local newspaper and a Notice in the Government Gazette of the Council's intention to adopt the Plan of Management.

The public exhibition of the Draft PoM included the following;

- Four (4) weekly notices in the Blue Mountains Gazette on 27 February, 3, 12 and 19 March.
- Notification in writing to all adjoining landholders in Blue Mountains and Lithgow LGA.
- Notification in writing to all stakeholders who were previously involved in the development of the plan.
- Posters placed on site and in local business and notice boards in Mt Victoria.
- Copies of the Draft PoM were available on the Council's website, at the Council offices and all libraries.
- Copies of the Draft PoM were provided to primary interest and user groups.
- A public meeting was held on 19 March 2008 at Mt Victoria Public School. The public meeting provided a summary of the Draft PoM, and the implication of implementing actions outlined in the Draft PoM. Opportunity was provided for discussion and feedback on the Plan, and feedback forms were provided to those attending the meeting.
- Notification was placed in the Government Gazette by the Department of Lands, Parramatta Office.

The plan was placed on Public Exhibition from 20 February until 4 April, a period of over six weeks.

**Public Submissions**

Public submissions were required in writing in accordance with the *Crown Land Act 1989*. 15 submissions were received with representation from the following categorised groups:

- Six (6) individuals – three (3) Mt Victoria residents, one (1) elsewhere in the Blue Mountains/Lithgow, one (1) Sydney metropolitan, and one (1) not-stated;
- Four (4) user groups (recreation and commercial recreation/education) – three (3) Blue Mountains/Lithgow, and one (1) Sydney metropolitan;
- One (1) interest group (environmental conservation) - Sydney metropolitan;
- One (1) heritage conservation group; and
- Three (3) agencies – all Blue Mountains/Lithgow (Lithgow City Council lodged two (2) separate submissions).

The submissions were reviewed by Council staff and Gondwana Consulting (refer to the enclosure *Summary and Analysis of Submissions*). The submissions included comments on environmental, recreation use and management, public amenity, heritage conservation and fire management issues.

The issues raised from the public submissions and recommended changes to the Draft PoM as are outline below in Table 1.

TABLE 1 Summary of Submissions

<b>CULTURAL and HISTORIC HERITAGE</b>	
<b>Issue raised</b>	<b>Amendment to the Draft PoM</b>
More specific provision required for the “protection of any future Aboriginal heritage items that come to light”.	Action added relating to appropriate management/protection of any Aboriginal heritage sites/values found on the reserve in future in accordance with legislative requirements and in collaboration with relevant Aboriginal people/organisations.
The PoM does not adequately separate users in the top section of Cox’s Road, with additional expenditure proposed to accommodate multiple use in this area to the detriment of its role as a heritage precinct. Additional developments in favour of rope sports are especially problematic.	PoM amended to remove the proposed training area from the upper section of Cox’s Road and suggest the investigation of alternative sites for a training area if there is demand for such a facility (rope-sports training is not to be permitted in the Mount York Day Use Area).
<b>VISUAL AND RESIDENTIAL AMENITY</b>	
<b>Issue raised</b>	<b>Amendment to the Draft PoM</b>
Parking for cars and coaches should be as unobtrusive as possible, with parking for coaches “further away from the monument area, such that they clog it neither physically or visually.”	Mt York Day Use Area Masterplan amended to locate bus parking in a less intrusive location in the short term (potentially along the northern side of the loop road east of Explorers’ Arch, or adjacent to the existing large concrete picnic shelter).
“More could be done to control visitors’ dogs” (such as more signs, heavy fines and a greater Ranger presence).	Provision added relating to increasing visitor awareness of appropriate dog control/behaviour within the reserve and potential impacts of dogs on the experiences of other visitors and the reserve’s fauna and other values.
<b>BUSHLAND/ FLORA/FAUNA /BUSHFIRE</b>	
<b>Issue raised</b>	<b>Amendment to the Draft PoM</b>
Bird populations change seasonally so “a consultant who visits the site a limited number of times would not be able to determine the full extent of the site’s avifauna”.	PoM amended to acknowledge that bird data may be incomplete due to seasonal characteristics of the area’s avifauna.
<b>BUSHFIRE</b>	
<b>Issue raised</b>	<b>Amendment to the Draft PoM</b>
PoM implies that Blue Mountains City Council be the responsible agency for the approval of fire management activities within the entire reserve, However bushfire responsibilities within the Lithgow City Council LGA should remain with the Lithgow Rural Fire Service.	PoM amended to indicate that fire use and management approvals for that part of the reserve within the City of Lithgow LGA are the responsibility of the Lithgow Rural Fire Service, while stressing the need for a co-ordinated approach to fire management across the reserve.

<b>RECREATION</b>	
<b>Issue raised</b>	<b>Amendment to the Draft PoM</b>
<b>Climbing/abseiling.</b>	
The proposed loop track to be developed from Cox’s Road to Barden’s Lookout “would pose safety issues for walkers with regards to potential rock fall from cliff users” and risks to “curious walkers wanting a closer look at cliff activities”.	PoM amended to specify that signage will be installed along the along the cliff bottom sections of the proposed loop walking track to exclude non-climbers/abseilers from the cliff base. The proposed wider lower loop track would be open to all users.
Historic roads that are open to walkers, mountain bikers and horseriding should not be called walking tracks but preferably, and more accurately, be labelled “shared trail” or “multi-use trail”.	PoM amended to label those routes identified as appropriate for shared recreational use as a “shared historic route“ in the case of historic roads (when referring to the recreational use of these roads) and “shared track” for other shared routes.
The proposed training area beside the upper section of Cox’s Road “is of little use ... the area can accommodate one group only and the height of the wall (1m) is too small to effectively prepare a novice for the cliff”.	PoM amended to identify this open area as an “approved” training/gathering site but with no facilities, and suggest the investigation of alternative sites for a training area if there is demand for such a facility (rope-sports training is not to be permitted in the Mount York Day Use Area).
<b>Issue raised</b>	<b>Amendment to the Draft PoM</b>
<b>Other recreational use.</b>	
The PoM acknowledges the historic roads as popular bushwalking destinations, but does not equally recognise their appeal as mountain biking routes.	Descriptive/information sections of PoM amended to more accurately reflect the popularity and use of the reserve’s trails as mountain biking destinations.
Totally opposed to blanket provision that walking is to be given priority where recreation uses of tracks//trails clash.	PoM amended to provide for measures to attempt to accommodate competing track users as a first response to usage conflicts, rather than immediate closure/exclusion of some activities.
PoM recommends that walkers have right of way on all shared routes with mountain bikers to “give way” (Page 108). This may not be the most practical solution, especially where walkers could easily step off a trail and for riders travelling uphill (where momentum is important for riders),	PoM amended to identify that mountain bikers travelling uphill have right of way on Lockyer’s Line of Road and Berghofer’s Pass, and walkers to have right of way on all other shared routes with mountain bikers to “give way”. PoM amended to clarify that horseriders “give way” to all other users of shared routes.
Tracks that are open to both walkers and mountain bikers should be called “shared trail” rather than ‘walking trail” to more accurately reflect shared use and	PoM amended to label those routes identified as appropriate for shared recreational use as a “shared historic route“ in the case of historic roads (when referring to the recreational use of these roads) and “shared track” for other shared routes.

alert users to the shared nature of these routes.	
Mountain bike usage impacts should be addressed by “a clear and transparent process ... that attempts all other avenues of addressing the issue before exclusions are implemented”.	PoM amended to elaborate on adaptive management approach, including possible response stages to impacts of mountain bike riding.
Maintenance of a primitive or basic camping option within the reserve is supported. Recommendation that any camping area be a “Fuel Stove Only Area”, if not year-round then at least for the fire safety danger period.	PoM amended to provide for both the short-term and long-term primitive camping areas at Mount York, as well as camping at Lockyer’s Line of Road, Hartley Vale Trackhead and Mitchell’s Ridge Lookout, to be “Fuel Stove Only” areas for the fire danger period from November to March with fires permitted only at other times.
Suggestion that the International Mountain Bike Association’s “rules of trail” be applied to mountain bike activities within the reserve.	PoM amended to refer to application of principles as found in International Mountain Bike Association’s “rules of trail”.
<b>RESERVE ADMINISTRATION and MANAGEMENT</b>	
<b>Issue raised</b>	<b>Amendment to the Draft PoM</b>
Support for the PoM’s proposal that the Blue Mountains City Council be “appointed the trustee of all lands within the Reserve including those within the Lithgow LGA” (Page 123 and Action 7.2 A)	PoM amended to note Lithgow City Council’s support for appointing Blue Mountains City Council as trustee for the entire reserve, including those areas within the Lithgow LGA.

**Financial and Resource Implications of the Plan**

The amendments to the Draft Plan have not significantly altered the financial implication of the plan. Thus, the resource and financial requirement for the final PoM are the same as those outlined for the Draft PoM in the 19 February 2008 report to Council. The financial implications are outline below.

There are a total of 92 actions within the Draft PoM across 7 broad management areas, which are listed below:

- Protection of Aboriginal Heritage Values;
- Management of Historic Heritage Values;
- Visual and Residential Amenity;
- Recreational Use;
- Bushland Management;
- Fire Management; and
- Reserve Administration.

It is acknowledged that there is a substantial shortfall in funding for asset management across Council assets. Current spending for maintenance activities in Mount York Reserve such as servicing toilets and bins is approximately \$11,000 per annum. However over the past two (2)

financial years (05/06 and 06/07) a substantial increase in resources has been directed to the Reserve in the form of site planning and facilities provision for site users. Further to this, substantial grant funding has been secured for the Reserve totalling \$105,000 over the 07/08 and 08/09 financial years.

Outlined below in Table 2 is a summary of the actions identified within the plan and the current funding status. The funding gap for high priority actions will be met through seeking further grants. Note that there are a large number of actions identified in the plan that are of medium and low priority for which Council funds have not been allocated, nor is there strategy to pursue external funding at this stage. These actions have been identified for the purpose of developing a comprehensive plan for the site and funding will be pursued once the completion of high priority actions has been carried out.

It is important to note that a PoM is not a commitment to undertake all of the activities, works and actions recommended in the adopted PoM. Rather it is an effective management tool to list necessary actions and identify their priority. An adopted PoM will allow strategic direction for improved resource allocation. Further to this, an adopted PoM will provide a sound basis for securing further external funding from a range of government grant bodies.

**TABLE 2 Summary of Actions and Funding Status of the PoM**

<b>ACTION</b>	<b>Indicative Cost.</b>	<b>Management Area</b>
<b>Currently Funded by BMCC</b>		
Prepare and implement bush regeneration program	15 person days	Bushland Management
Implement tree inspection program annually	5 person days	Bushland Management
Remove existing pit toilet and replace with waterless hybrid unisex toilet	\$45,000	Recreation
Management of cliff recreation	21 person days	Recreation
Fire management - Identify and implement asset protection zones	\$15,000	Fire Management
Formally gazette all parcels into a single Reserve. Ensure appropriate categorisation	5 person days	Reserve Administration
<b>Currently Funded - Grants (fully funded)</b>		
Design visitor facilities/ liaise with user groups	\$15,000	Recreation
Address safety issues of cliff edge signage/ barrier	\$12,000	Recreation
<b>Currently Funded - Grants (partly funded)</b>		
Implement soil conservation and drainage plans for historic roads	\$94,000	Historic Heritage
Restoration of top section of Cox's road	\$85,000	Historic Heritage
Management of mountain bike and horse riding	\$9,000	Recreation
Management of walking track networks including orientation signage at track heads	\$60,000	Recreation
<b>Funding Dependant on Grants</b>		
Site protection and identification	\$30,000	Aboriginal Heritage
Site Interpretation plan	\$20,000	Historic Heritage
Management of historic monuments	\$10,000	Historic Heritage
Construct access track to The Gully	\$15,000	Recreation
Formalise de facto camp ground	\$7,000	Recreation
Treatment of cliff recreation sites	\$15,000 - \$45,000	Recreation
Formalise climbing training area	\$10,000	Recreation
Replace/ upgrade park furniture	\$2-25,000	Recreation

Upgrade and formalise Bardon’s Lookouts and visitor nodes.	\$112,000	Recreation
Master planning Mitchells Ridge lookout	\$30,000	Recreation
Development of long term camping site	\$100,000	Recreation
Information and education	\$35,000	Recreation
<b>Funding dependant on BMCC</b>		
Provide total fire ban signs at major visitor nodes	\$2,500	Fire Management
Identify evacuation and collection points	\$1,000	Fire Management

For a detailed breakdown of the proposed actions refer to the enclosure, Section 6 in the Mount York PoM.

The implementation of actions identified in this plan would be subject to normal decision making processes by the Council such as the Capital Works Program and priorities elsewhere within the broader environmental and recreation works program. It is also important to note that the Council’s Long Term Financial Strategy identifies significant city wide challenges in providing new assets, maintaining assets and renewing them at the end of their effective life. Consideration of the Council’s financial position may influence the implementation of actions at Mount York Reserve, including those identified in the final approved PoM for Mount York Reserve.

**Sustainability Assessment**

<b>Effect</b>	<b>Positive</b>	<b>Negative</b>
<b>Social</b>	Supports sustainable reserve and recreational infrastructure management providing ongoing provision of a range of services that contribute to the social well-being of resident’s and visitors.	There are no negative social impacts identified by adoption of the PoM
<b>Economic</b>	Supports the existing nature based recreation industry in the Blue Mountains, and provides a sustainable strategy for their continued operation at Mt York Reserve. Supports a diverse range of nature based recreation and tourism opportunities.	There are no negative economic impacts identified by adoption of the PoM.
<b>Environmental</b>	The PoM contributes to the protection of the significant natural and cultural heritage values of the Reserve. The management framework and actions contained in the PoM will minimise impacts associated with existing and potential degrading processes.	Some existing activities will continue to result in minor impacts, however, with continued management intervention these impacts can be reduced to a level that is considered sustainable and will not adversely affect the values of the reserve.

**Legal and Risk Management Issues**

Actions contained in the Mount York PoM will contribute to improving the legal and risk management position of the Council. The PoM has identified several risk management issues associated with the Reserve and has proposed actions to achieve improvements and address these issues.

**Conclusion**

The development of the Mount York Reserve PoM involved comprehensive research, field investigation and stakeholder consultation. The plan has sought to improve management of the Reserve and resolve any competing demands as well as address the Councils legal responsibilities associated with the *Crown Land Act*. The public exhibition process and the submissions received endorsed the Draft Plan and provided constructive comments for improvement.

It is recommended the Council formally adopt the Mount York Reserve Plan of Management.

\* \* \* \* \*